

Bansuri



(North-Indian transverse Bamboo Flute)

Main [solo] Instrument: In the key of 'E'
[fingered by closing upper three holes]

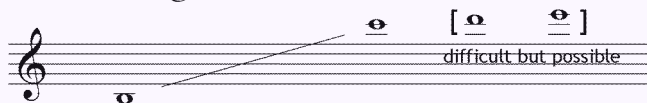
Sound Examples



Idiosyncrasy:

- It is a modal instrument
- 'Alto flute'-like sounding, with a sweet, 'liquid', slightly 'airy' tone.
- Powerful, expressive vocal-like melodies
- Great bends & *glissandi* ['meends']
- While not having a strongly high-harmonic spectrum content, can still project fairly well (especially when using smaller instruments).

Basic Range:



[Link to Basic Scales](#)

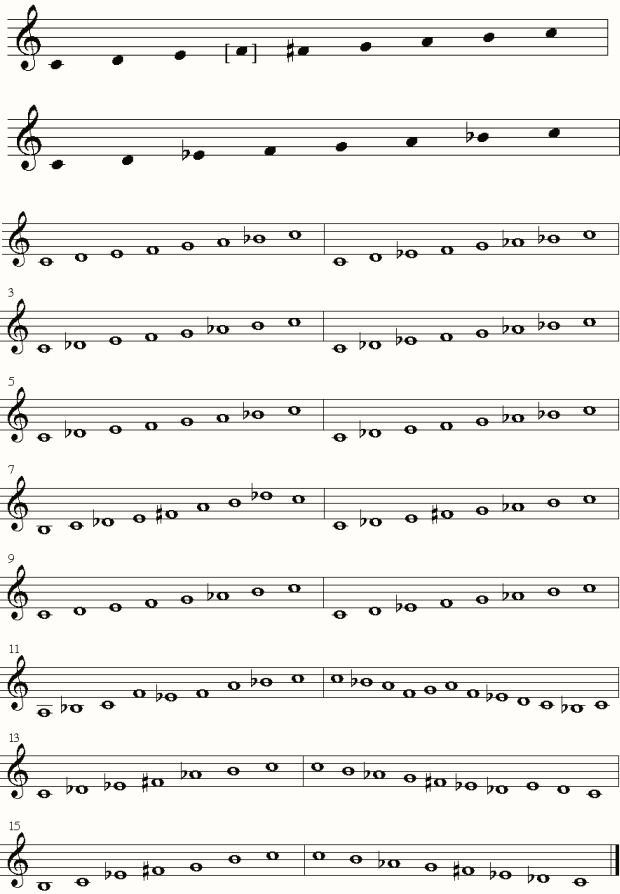
[Bansuri 'Family' Link](#)

Other Observations: Non-traditional performing techniques allow very effective, powerful 'rhythmic guitar'-like motifs, including *portamento*-'air-only' sounds.

Bansuri

(North-Indian transverse Bamboo Flute)

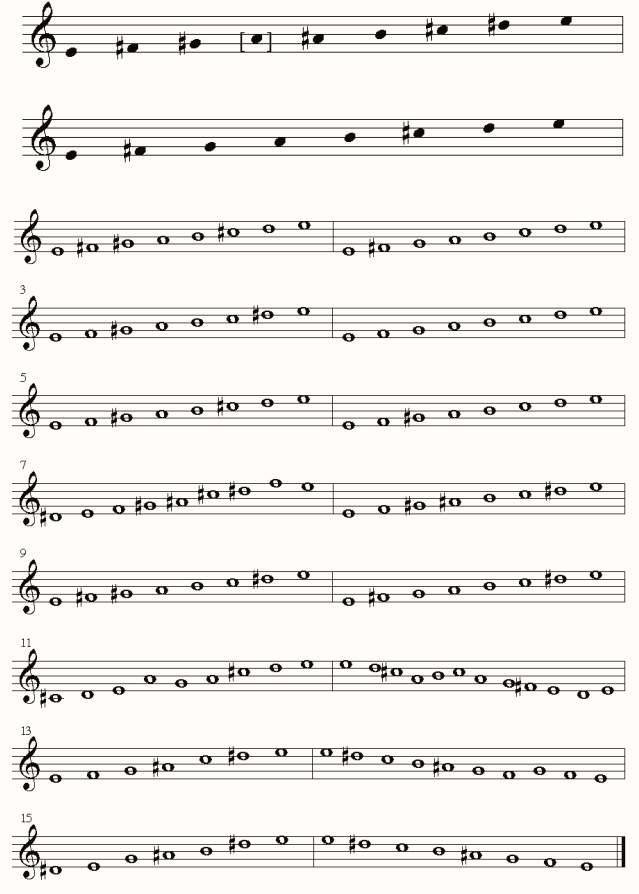
Basic Scales:



Musical notation for basic scales, consisting of 15 staves of music in treble clef. The notation includes various note values and accidentals, representing different scales and exercises for the Bansuri.



Sounds:



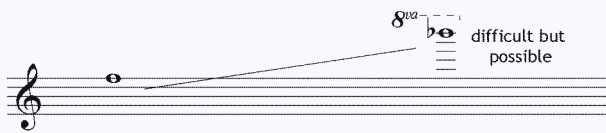
Musical notation for sounds, consisting of 15 staves of music in treble clef. The notation includes various note values and accidentals, representing different sounds and exercises for the Bansuri.

Bansuri 'Family'



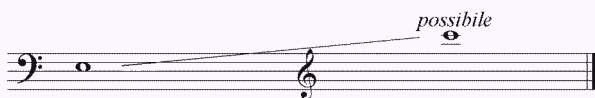
Instruments: They go from Picc. [in 'F', 20 cms] to Bass [in low 'A', 115cms]:

Picc. Bansuri Range:

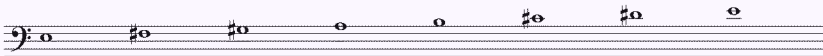


And its Basic Scale:

Bass Bansuri Range:



And its Basic Scale:



Bansuri family range [from bass through picc.]
(basically four octaves):



Other Comments:

The Bansuri is an extremely versatile instrument. Although a direct result of North-Indian classical music, it is --acoustically-- a key-less, transverse bamboo flute!

This remarkable flexibility allows evoking other musical cultures very effectively.

[Picc. Bansuri mp3](#)

[Bass Bansuri mp3](#)